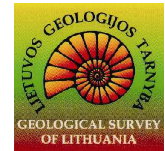


“GEOHERITAGE AND INTERNATIONAL BORDERS – PERSPECTIVE FOR SUSTAINABLE DEVELOPMENT”

11–12 June 2007
Augustów, Poland

FIRST CIRCULAR AND CALL FOR PAPERS



AUGUSTÓW was a royal town, and it has been reflected in its coat of arms till today. The town was granted civic rights, as well as the name, by King Zygmunt August in 1557. Augustów was situated on the banks of the Netta River, where historical tracks from Lithuania to Podlasie, Mazovia, and Prussia crossed. Thanks to such a position the town had been developing till the times of the Swedish invasion. The wars of 1656 and 1708 ruined the town, and the plague which broke out in 1710 decimated its population. However, at the beginning of the 19th century, there were 3000 inhabitants in Augustów. It was then that the town got a big chance connected with the construction of the Augustów Canal.

THE AUGUSTÓW CANAL is a precious masterpiece of water construction, unique on the European scale, dating from the first half of the 19th century. Preserved wholly, it is a testimony to engineering art of Polish constructors, both military and civil. Historically, this waterway was to link the Vistula with the Neman through the Narew, Biebrza, Netta and Czarna Hańcza Rivers. Further, through the Windawa River it was connected to the Baltic port Windawa. Because eventually the Windawski Canal was not built, the Augustów Canal linked with the Baltic Sea through the Neman River. For a long time the Canal has had a well-earned reputation among experts, lovers of water sports and Suwałki Region admirers.

THE CONFERENCE IS HELD UNDER AUSPICES OF

INTERREG project No 2005/041/1VL-510 „Elaboration of geoenvironmental assumptions for Geopark Yotvings in the cross-border Polish-Lithuanian area”.

IUGS-ICSU project Application of geoscience for sustainable development of cross-border areas (GEOCrossBorder).

ORGANISERS

- Neighbourhood Programme Lithuania, Poland and Kaliningrad Region of Russian Federation – INTERREG
- IUGS
- ProGEO
- Polish Geological Institute
- Lithuanian Geological Survey

CONFERENCE AIMS

- Presentation of INTERREG project „Elaboration of geoenvironmental assumptions for Geopark Yotvings in the cross-border Polish-Lithuanian area” and discussion of project development
- Promoting of geological heritage of Northern and Central Europe as well as increasing of awareness concerning geological knowledge and related social problems
- To strengthen trans-boundary co-operation and promote initiatives in application of elements of the geological heritage in the sustainable development

ORGANIZING COMMITTEE

Marek Graniczny and Jonas Satkūnas Co-Chairmen

Magdalena Czarnogórska and Alma Grigienė Co-secretaries

PRELIMINARY PROGRAMME

June 11th, 2007 – arrival, registration and main session (arrival 10th is also available),
barbecue party

June 12th, 2007 – field-trip –Augustów Canal cruise
conference dinner

June 13th, 2007 – departure of participants after breakfast

CONFERENCE PRESENTATIONS AND MATERIALS

All participants are welcome to submit proposals of their presentations in oral and poster form.

The text of extended abstracts in English should not exceed three A4 pages, including figures, tables and references. Abstracts should be written using 12p Times New Roman font, the margins should be 1.5cm at top and bottom and 2.5 cm left and right. Text should be preferably sent by e-mail, followed by a hard copy with figures.

Deadline for abstract submission is April 30, 2007.

The official language of the Conference is English.

REGISTRATION

Preliminary registration form is to be returned before March 15, 2007 to the conference secretary – e-mail: magdalena.czarnogorska@pgi.gov.pl

REGISTRATION FORM

- electronic
- printable (.doc, .pdf, .jpg)

REGISTRATION FEE

Participation will be based on registration and payment of the Conference fee. Conference fee is 150 EURO which includes lunches, coffee breaks, Barbecue Party, Conference Dinner, Augustów Channel cruise, Conference materials. The payments by cash in Euro at the Conference reception desk.

More detailed information will be provided in the 2nd Circular, which will be distributed in the beginning of April 2007 to those who respond to the 1st Circular.

CONTACTS

Please contact Co-Chairmen or Secretaries for more information.

Secretaries

Magdalena Czarnogórska

Polish Geological Institute

e-mail: magdalena.czarnogorska@pgi.gov.pl

4 Rakowiecka Str.

00-975 Warsaw, Poland

tel.: (+48 22) 8495351 ext.358

fax : (+48 22) 8495342

Alma Grigienė

Lithuanan Geological Survey

Konarskio 35 Str.

2600 Vilnius, Lithuania

e-mail: alma.grigiene@lgt.lt

Co-chairmen

Prof. Marek Graniczny

Polish Geological Institute

e-mail: marek.graniczny@pgi.gov.pl

4 Rakowiecka Str.

00-975 Warsaw, Poland

tel.: (+48 22) 8495351 ext.518

fax : (+48 22) 8495342

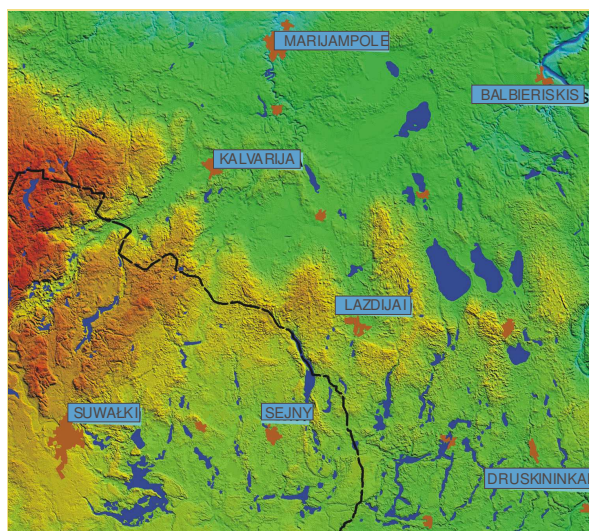
Dr Jonas Satkunas

Lithuanan Geological Survey

Konarskio 35 Str.

2600 Vilnius, Lithuania

e-mail: jonas.satkunas@lgt.lt



PRE-REGISTRATION FORM:
**“GEOHERITAGE AND INTERNATIONAL BORDERS – PERSPECTIVE FOR
SUSTAINABLE DEVELOPMENT”**
11–12 June 2007, Augustów, Poland

Last Name:

First Name:

Organization:

Address:

Postcode and City:

Country:

Telephone:

Fax:

e-mail:

Form of presentations (please cross):

Oral presentation

Poster presentation

Title of presentation:

.....
.....
.....
.....

.....
signature
