



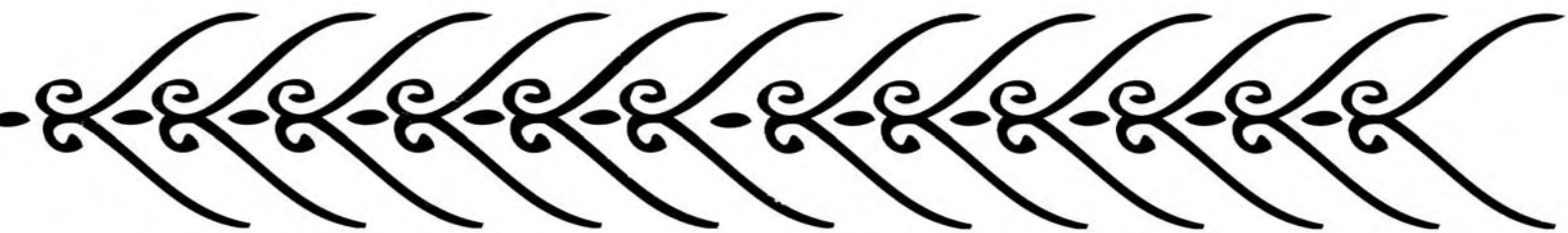
8th European Geoparks Conference



**Idanha-a-Nova
Geopark Naturtejo**

14-16th September 2009

**“New Challenges with Geotourism”
2nd Circular**



www.geoparknaturtejo.com





Introduction

Geotourism is a segment of tourism that has been developed around the world in recent years. In fact since long ago people come to visit "geological wonders", like mountains, caves and canyons. However, only in recent times there is a real challenge in this sector and it has been developing a market with very specific and novel characteristics.

Excellence in Nature Tourism is supported by the sustainable use of natural heritage, promoting Nature awareness, through interpretation. This niche has been growing worldwide in the last years and nature tourists look for certified destinations, as we want to develop in Geoparks under the auspices of UNESCO.

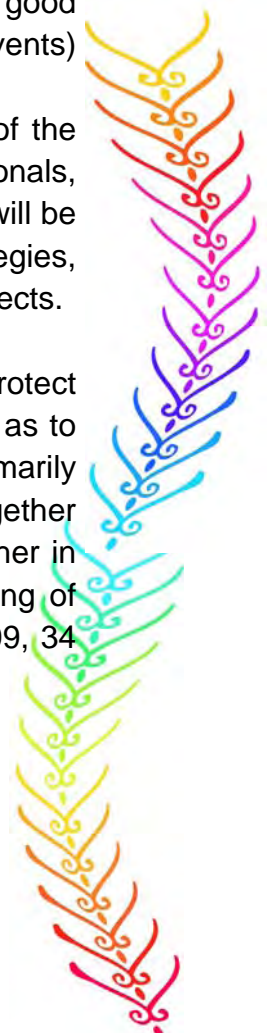
Geotourism is an emerging segment of Nature Tourism in which the objective focuses on Geodiversity. A new niche was created for business with new specificities and new contingencies that accompanies not only the general trends of tourism but also imposes its own trends. Geoparks are pioneers in Geotourism and an example of sustainable local development.

Geotourism needs awareness for Geological Heritage. Geological processes with high scientific interest can be associated to aesthetics and become geosites with tourist potential. It is intended to stimulate the knowledge of Geodiversity, Geoconservation and sustainable development.

It is crucial that Geotourism has other benefits than geodiversity to diversify the offer: one site with rich geological heritage should have also cultural, historical and natural (bio and geo) approaches. But it is also important to have good interpretation and supportive structures (lodging, restaurants, activities/events) to receive high-demanding geotourists.

"New challenges with Geotourism" will be the main topic of discussion of the 8th European Geoparks Conference, destined for (geo)tourism professionals, politicians, local managers, nature conservationists and geologists where will be discussed tourism, local development, geoconservation, marketing strategies, geopark projects, scientific research, good and bad practices and new projects.

Established in 2000, the European Geoparks Network (EGN) aims to protect geodiversity, to promote geological heritage to the general public, as well as to support sustainable economic development of geopark territories, primarily through the development of geological tourism. The network has drawn together territories from across Europe that share these aims and now work together in an active and dynamic way in order to achieve them. Originally consisting of four territories, the network has been expanded to include, from April 2009, 34 territories across 13 European countries.



European Geoparks Network



1. Réserve Géologique de Haute Provence – FRANCE
2. Vulkaneifel European Geopark – GERMANY
3. Petrified Forest of Lesvos – GREECE
4. Maestrazgo Cultural Park – Aragon, SPAIN
5. Psiloritis Nature Park – GREECE
6. Terra.Vita Nature Park – GERMANY
7. Copper Coast Geopark– IRELAND
8. Marble Arch Caves European Geopark– NORTHERN IRELAND, UK
9. Madonie Geopark – ITALY
10. Rocca di Cerere - ITALY
11. Nature Park Steirische Eisenwurzten – AUSTRIA
12. Nature Park Bergstrasse Odenwald – GERMANY
13. North Pennines AONB – ENGLAND, UK
14. Park Naturel Régional du Luberon – FRANCE
15. North West Highlands – SCOTLAND, UK
16. Geopark Swabian Albs – GERMANY
17. Geopark Harz Braunschweiger Land Ostfalen Geopark – GERMANY
18. Mecklenburg Ice Age Park – GERMANY
19. Hateg Country Dinosaurs Geopark – ROMANIA
20. Beigua Geopark - ITALY
21. Fforest Fawr Geopark – WALES, UK
22. Bohemian Paradise Geopark – CZECH REPUBLIC
23. Cabo de Gata – Nijar Nature Park – Andalucia, SPAIN
24. **Naturtejo Geopark – PORTUGAL**
25. Sierras Subbeticas Nature Park – Andalucia, SPAIN
26. Sobrarbe Geopark – Aragon, SPAIN
27. Gea Norvegica – NORWAY
28. Geological, Mining Park of Sardinia – ITALY
29. Papuk Geopark - CROATIA
30. Lochaber Geopark – SCOTLAND, UK
31. English Riviera Geopark – ENGLAND, UK
32. Adamello – Brenta Nature Park – ITALY
33. Geo Mon – WALES, UK
34. Arouca Geopark - PORTUGAL



Organizers

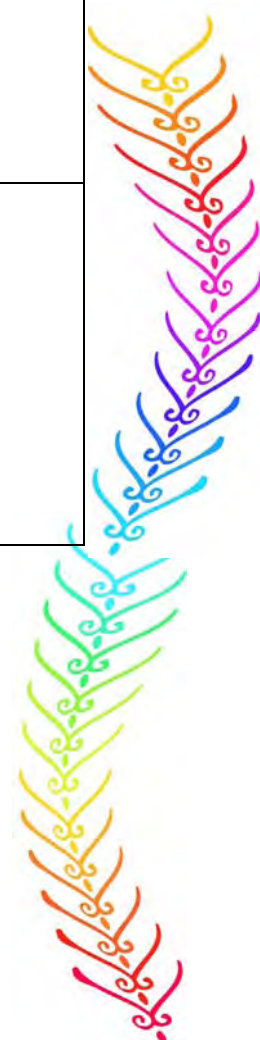
The 8th European Geoparks Conference will be organized by Geopark Naturtejo and Idanha-a-Nova Municipality, with the support of the remaining Naturtejo municipalities: Castelo Branco, Nisa, Oleiros, Proença-a-Nova and Vila Velha de Ródão.

Program

The 8th European Geoparks Conference will comprise general sessions and thematic oral sessions with invited speakers and selected oral presentations and poster sessions related to the main objectives.

The 8th European Geoparks Conference will take place at Centro Cultural Raiano, Idanha-a-Nova.

| | 14th | 15th | 16th | 17 th |
|-----------|---|--|--|------------------------------|
| Morning | Opening of the registration desk | I European Geoparks Tourism Fair/ Feira Raiana | Conference Work Sessions | Departure to the Field Trips |
| Afternoon | | Conference Work Sessions | Conference Work Sessions | |
| Evening | Idanha Film and Internet Festival Medieval Icebreaker Dinner Public Opening of the 8th European Geoparks Conference/Idanha Film and Internet Festival (Penha Garcia Ichnological Park) | Luisa Amaro Concert/Idanha Film and Internet Festival/Feira Raiana | Idanha Film and Internet Festival: Castle Party/Feira Raiana | |



Key-note Speakers

Nikolaos Zouros (EGN coordinator)

Theme: European Geoparks Network and Geotourism



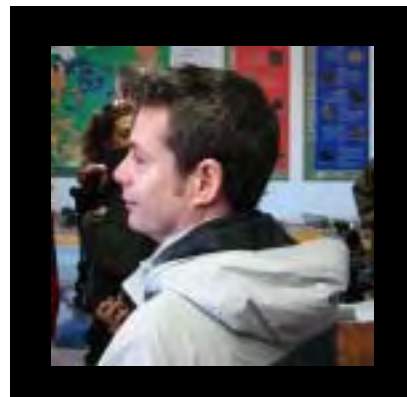
Nickolas Zouros is Associate professor of physical geography at the University of the Aegean and director of the Natural History Museum of the Lesvos Petrified Forest (Greece). He graduated with a PhD in geology (tectonics) from Aristotle University of Thessaloniki in 1993 and then undertook several years post-doctoral research. He was elected Director at the Natural History Museum of the Lesvos Petrified Forest in 1995 with main duties

the protection, research and promotion of the Petrified forest of Lesvos. Zouros worked for the establishment of the Museum and the Petrified Forest as main tourist attractions of Lesvos island and the development of geoconservation and geological tourism. His involvement in geoparks started in 1996 during the 30th IGC and he was one of the founders of the European Geoparks Network in 2000. In 2003 Nickolas Zouros was elected coordinator of the European Geoparks Network. During the last 10 years he has worked closely with UNESCO and fellow coordinator P. McKeever to promote and develop the geopark concept in Europe but, increasingly, in other parts of the world as a member of the bureau of the Global Network of National Geoparks (GN).

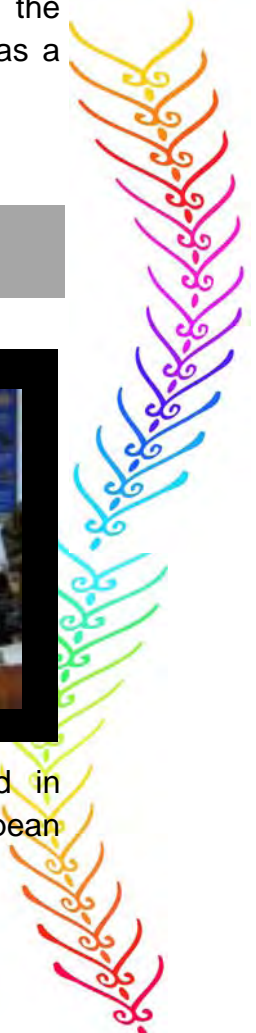
Patrick McKeever (EGN vice-coordinator)

Theme: European Geoparks Network and Geotourism

Mc Keever was graduated with a PhD in geology (sedimentology and vertebrate ichnology) from Queen's University of Belfast in 1990 and then undertook several years post-doctoral research at the University of Manchester (UK). Returned to Ireland in 1995 to take up a new position at the Geological Survey of Northern Ireland to develop geological tourism, creating geological walking and touring routes across the north of Ireland and marketing the region as a geological field destination to university groups. Patrick Mc Keever became involved in



Geoparks in 2000 and in 2003 was elected vice-coordinator of the European



Geoparks Network. Since then he has worked closely with UNESCO and fellow coordinator Nikolaos Zouros to promote and develop the Geopark concept not just in Europe but, increasingly, in other parts of the world as a member of the bureau of the Global Network of National Geoparks (GGN). Mc Keever also works closely with IUCN as an evaluator of world heritage nominations and he is a member of the World Commission on Protected Areas. He is Principal Geologist at the Geological Survey of Northern Ireland and continues to promote and develop sustainable geological tourism in that region. He is currently visiting professor at the National University of Malaysia where has been assisting the community on Langkawi to more fully understand and embrace the geopark concept as well as meeting people from other areas in Malaysia that are interested in developing geoparks.

José Brilha (ProGEO-Portugal)

Theme: Geological Heritage and Geoconservation in Portugal

Research expert on Geochemistry and Clay Minerals and involved on Geological Heritage and Geoconservation issues since 1998, José Brilha is Professor at the University of Minho (Braga, Portugal). Member of the Executive Committee of ProGEO and founder of the Portuguese group of this association in 2000, director of the first Master Course on Geological Heritage and Geoconservation since 2005, and editor of the new international journal “Geoheritage”, José Brilha is nowadays a leading personality on Earth Heritage at national and international levels.



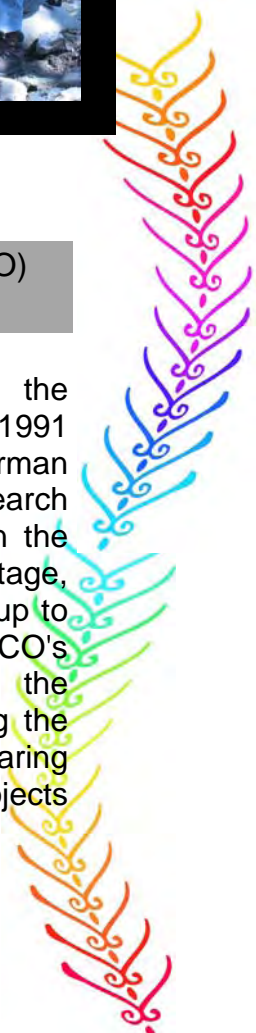
Margarete Patzak (Division of Ecological and Earth Sciences - UNESCO)

Theme: UNESCO and Global Geoparks Network



Margarete studied Geology and Mineralogy at the University of Würzburg, Germany. Her Ph.D. in 1991 was in Mineralogy on metamorphic rocks of the German Continental Deep Drilling Project. She was research assistant and coordinator of European projects on the protection and conservation of cultural heritage, EURO CARE, based at the University of Karlsruhe up to 1995. Since 1996 Margarete is working at UNESCO's Division of Ecological and Earth Sciences for the International Geoscience Programme (IGCP) being the coordinator of the Global Geoparks initiative, preparing and managing geological heritage and Geopark projects

and networks.



Ross Dowling (Edith Cowan University, Australia)
Theme: New Challenges with Geotourism

Ross Dowling is Foundation Professor of Tourism, and Head of the Tourism Program, School of Marketing, Tourism & Leisure, Faculty of Business & Law, Edith Cowan University, Western Australia. Internationally he is an Advisor, UNESCO Global Network of National Geoparks (France) as well as an Executive Board Member of the Indian Ocean Tourism Organization (Oman). In Australia he is Co-founder and Executive Director of Ecotourism Australia as well as an Advisor to Cruise Down Under. In Western Australia he is Chair of the Forum Advocating Cultural and Eco Tourism (FACET) as well as a Council Member of the Royal Automobile Club and the National Trust.



As a Director of Resolve Global (www.resolveglobal.com.au), he is an international consultant on tourism providing advice for the industry in a number of countries around the world. In recent years he has established a Tourism degree for Emirates Airlines, United Arab Emirates; convened a number of International Tourism and Hospitality Conferences in Malaysia; lead an Australian team giving Tourism Industry Development Workshops for the Vietnam Government; completed an extensive lecture tour for the Chinese Government, throughout China, Hong Kong and Macau; and advised on Tourism Development for the Minister of Tourism, Sultanate of Oman. In 2008 he convened the Inaugural Global Geotourism Conference in Australia.

He is a prolific author and researcher with over 200 tourism publications. In recent years he has co-authored or co-edited nine books on tourism. They are *Ecotourism*, *Tourism in Destination Communities*, *Natural Area Tourism*, *Ecotourism Policy and Planning*, *Wildlife Tourism*, *Geotourism*, *Cruise Ship Tourism* and *Coastal Tourism Development*. Two have been translated into Chinese and others published in India.

Dr Dowling's expertise lies in Tourism Development Planning and he has been actively involved in the tourism industry as a tour guide in Asia, the Pacific and the Antarctic. He has been awarded an NZ Conservation Foundation Citation and a Mobil Environmental Award as well as a Perth Tourism & Aviation Scholarship.



Subjects in discussion



1. Geoparks and Tourism

Geology and Tourism is a new combination that Geoparks are promoting. The territories need not only beautiful landscapes but also tourist strategies that promote regions in a responsible way. Geotourists ask for new challenges.

2. Geotourism and local development

Geotourism was born from a happy association between Geology and Tourism. It is a new kind of Nature Tourism that aspires being the solution for local development of rural areas and that involves several agents such as geoscientists, politicians and local managers.

3. Geoparks and Science

Geopark's definition stands at the geodiversity concept. It's necessary to support the geotourist practices with scientific research to produce stronger knowledge about Geology. We can't forget that Geology is a Science and we can't promote it if we don't know our territories.

4. Geoconservation best practices and wrong ways

Geoconservation is one the main aims of a Geopark. Each EGN member has to find the best way to protect their geological heritage. Let's share our good examples and learn with the not so good experiences.

5. Marketing strategies for a strong EGN brand

Marketing strategies must be a pillar in each Geopark for tourism development. It is necessary to create strategies to promote Geodiversity & land products that link all the Geoparks for a strong EGN brand.



6. Man and Nature: cultural landscapes

Local culture is important for sustainable development and geotourism. Traditions usually combine man and nature in a symbiotic approach. Man has been using nature for thousands of years and has been changing the environment.

7. New Geoparks and their tutors

It is not easy to create new European and Global Geoparks. It's necessary to prepare a territory and to promote new strategies towards sustainable development using Geodiversity. EGN wants a strong and bigger network with new projects supported by experienced Geoparks in long-term projects.

Aims

The aim of the 8th European Geoparks Conference is to discuss new methodologies for developing Nature tourism, to explore the establishment of Geoparks as high quality destinations for alternative tourism, to promote recent developments in protection and promotion of natural heritage in combination with local development as well as in management and operation of Geoparks.

It is also intended to:

- Unify Geoparks for a stronger European Geoparks Network
- Promote EGN towards local, national and international authorities
- Project UNESCO Geopark brand as a reference in national and international tourism
- Develop geoconservation measures for sustainable use of geosites
- Raise awareness of EGN as example for the development of other continental networks

Honorary Committee

Margaret Patzak (Division of Ecological and Earth Sciences – UNESCO)

Fernando Andresen Guimarães (President of UNESCO Portuguese Committee)

Pedro Machado (President of Centre of Portugal Tourism Region)

Joaquim Morão (Mayor of Castelo Branco municipality and President of Association of Municipalities Natureza e Tejo)

Nickolas Zouros (EGN Coordinator/Petrified Forest of Lesvos Geopark)

Patrick Mc Keever (EGN vice-Coordinator/Geological Survey of Northern Ireland)



Armindo Jacinto (President of Geopark Naturtejo/Vice-Mayor of Idanha-a-Nova municipality/Vice-President Centre of Portugal Tourism Region)

Álvaro Rocha (Mayor of Idanha-a-Nova municipality)

Gabriela Tsukamoto (Mayor of Nisa municipality)

José Marques (Mayor of Oleiros municipality)

João Paulo Catarino (Mayor of Proença-a-Nova municipality)

Maria do Carmo Sequeira (Mayor of Vila Velha de Ródão municipality)

António Galopim de Carvalho (National Museum of Natural History)

Organizing Committee

Armindo Jacinto

Carlos Neto de Carvalho

Joana Rodrigues

Manuela Catana

Cristina Preguiça

Tiago Oliveira

Eliane Antunes

Fátima Rodrigues

Alice Marcelo

Rita Mota

Rafael André

Rui Tomás Marques

Scientific Committee

Carlos Neto de Carvalho (Geopark Naturtejo)

Joana Rodrigues (Geopark Naturtejo/University of Minho)

Maria Catana (Geopark Naturtejo/University of Minho)

Rui Tomás Marques (Geopark Naturtejo/University of Lisbon/BlueEarth)

Rafael André (Geopark Naturtejo/Abilis)

Tony Ramsay (Fforest Fawr Geopark)

Joan Poch (Sobrarbe Geopark)

Mário Cachão (University of Lisbon)

José Brilha (University of Minho)

Vanda Santos (Natural History National Museum)

Nuno Rodrigues (Natural History National Museum)

Elizabeth Silva (National Commission for UNESCO)

Andrea Baucon (University of Milan)

Roigar López (University Bolivariana de Venezuela/Fundación Geoparques de Venezuela)

Jesus Salazar (University Bolivariana de Venezuela/Fundación Geoparques de Venezuela)



Supporting Institutions



centro



Comissão Nacional da UNESCO
PORTUGAL



The European Association for the Conservation
of the Geological Heritage
ProGEO - Portugal



University of Minho
Earth Sciences Centre



Geopark Naturtejo Location



Naturtejo Geopark Territory

Description of the territory

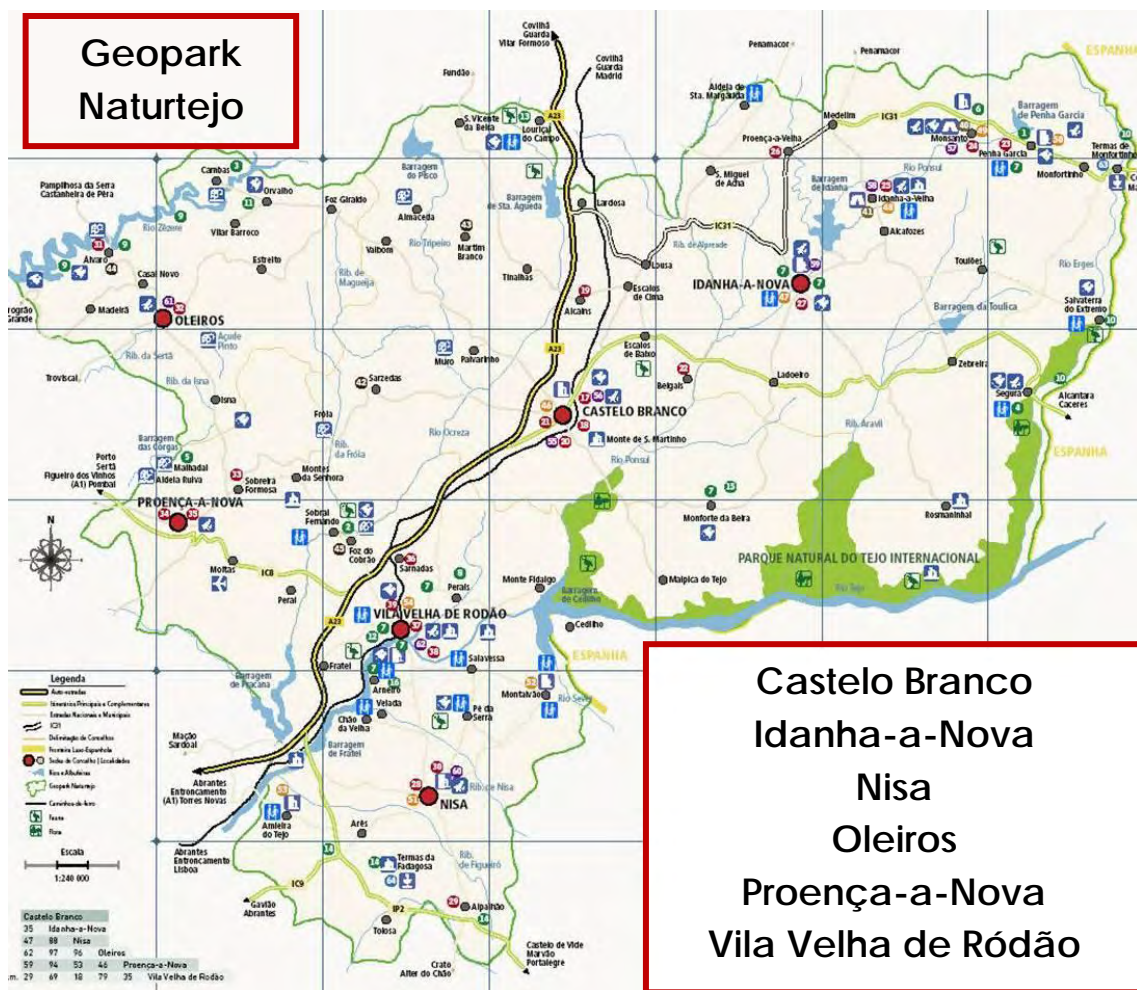
Naturtejo matches with the area of Castelo Branco, Idanha-a-Nova, Nisa, Oleiros, Proença-a-Nova and Vila Velha de Ródão municipalities, with a total of 4617km²

Orography

The area is composed, in an orographic point of view, by vast planes organized in Alpine-related demi-horsts and grabens bordered by active faults, with altitudes such as 250-300m, 400-450m and 900-1000m, with an altimetry increasing to North and culminating in Gardunha, with 1227m the highest point. The topographical monotony is cut by local residual relieves with a sedimentary (such as Magarefa, Castelo Branco, or Murracha, Idanha-a-Nova) and plutonic (as granite inselberge, such as Monsanto, Idanha-a-Nova) origin and by tectonic-derived alignments like fault escarpments (which is a fine example the Ponsul fault scarp with 85 km) and quartzite ridges found all over the region



(Penha Garcia, Monforte da Beira, Castelo Branco, Serra da Pedraqueira, Serra do Muradal and Serra do Ródão). Plain areas are also cut by the Lower Tejo deep fluvial network incision, the biggest river in the Iberian Peninsula. Naturtejo is limited at North by the deep valley of the meandering Zêzere river, the Tejo most important tributary in Portugal. Other important rivers that cross and help to limit the territory are the Ponsul, the Ocreza, the Erges (in Tejo right bank), the Sever and the Ribeira de Nisa.



Weather

The weather is deeply influenced by orography, being typically Mediterranean, with no influences from the Atlantic humidity, characterized by long and hot summers almost without rain and mild winters with strong downpour. In the mountains, the winter temperatures rarely goes under -5°C ; In summer, the general temperatures frequently exceed 30°C , not being rare the days with temperatures beyond 40°C .

Population

The population in Naturtejo municipalities sums 96307 habitantes (data from 2001-2002) and a population density of 23,1 inhab./km². The region is



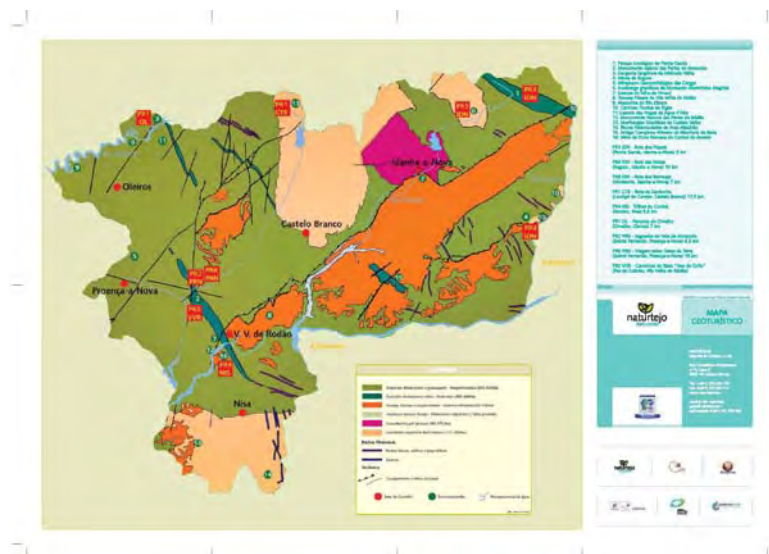
composed by one city capital of district (Castelo Branco), 5 towns capital of municipalities (Idanha-a-Nova, Nisa, Oleiros, Proença-a-Nova and Vila Velha de Ródão), 74 parish villages and more than four hundred small localities.

Economical activities

The main economical activities in the region are agriculture and commerce. Tourism started recently, clustered in urban areas (municipalities) and in towns with the national status of Historical Villages (Monsanto and Idanha-a-Velha), as well as in medieval fortified villages such as Penha Garcia, Amieira do Tejo, etc. Stands out the thermal tourism, with the existence of Monfortinho Thermal Complex (Idanha-a-Nova), very well known in Portugal and one of the most technological advanced in Europe and Fadagosa Thermal facilities in Nisa.

Geology

In this wide region ruled by a cultural heterogeneity based on historical and even natural criteria, Geology appears as a levelling element, since the geological evolution of this region was ruled, grosso modo, by the same fundamental stages which, through millions of years, have moulded the landscape. The elements that have built landscape are ubiquitous, although creators of diversity: Wide areas flattened with Mesocenozoic polygenic evolution over a major Proterozoic basement (Beiras Group); numerous residual relieves, which ex-libris are the Ordovician quartzites appalachian-style relieves and the late-Variscan granite inselberge; intramountain basins with alluvial to fluvial coarse sediments deposited during the Alpine Orogeny paroxysms; hydrographical systems, deeply carved during the climate crisis of the Pleistocene and induced by important neotectonics in the fragile domain, which broke the landscape in a block succession and motivates the thermal richness of the region.



Geomonuments

(photos: Pedro Martins, Carlos Neto de Carvalho and Joana Rodrigues)



Penha Garcia Ichnological Park



Portas de Almourão Geomonument



Malhada Velha Epigenic Gorge



Segura Mines



Corgas Geomorphological Viewpoint



Inselberg of Monsanto-Moreirinha-Alegrios



Ponsul's Fault Scarp



Velha de Ródão Fossil Trees





Zêzere River Meanders



Erges River Gorges



Fraga da Água D'Alta Waterfall



Portas de Ródão Natural Monument



Granite Landforms of Castelo Velho



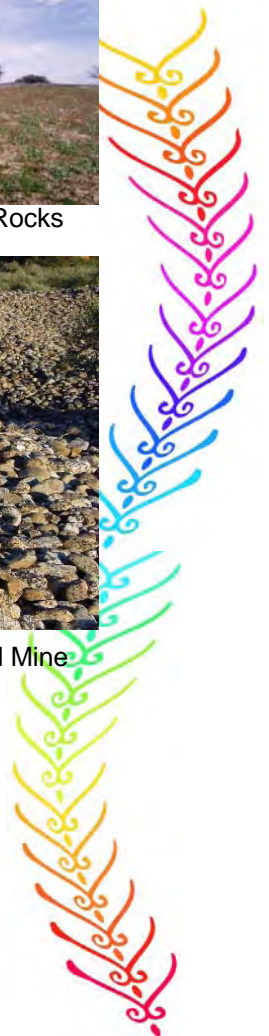
Arez-Alpalhão Pedestal Rocks



Monforte da Beira Mining Complex



Conchal do Arneiro Roman Gold Mine



Museological Panorama

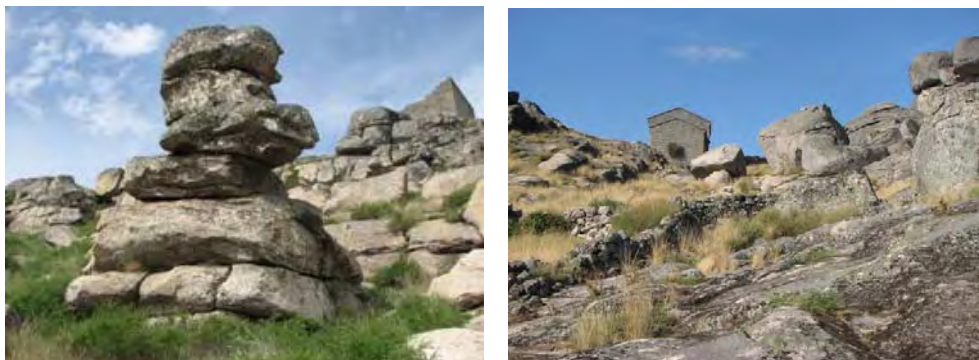
The **Stonemason Museum** has an exhibition that allows to know the reality of exploration of granite in Portugal throughout the times. It is particularly pointed out the historical evolution of this activity in the region of Alcains, its economical importance and its influence in the local society.



Paleontological Complex of Penha Garcia is an Exomuseum where the fossils are the main attractions. Here it is possible to explore Ordovician times through the “Fossils Trail” where the ancient ocean is now a mountain.



The **Monsanto Geomorphological Park** is an Exomuseum considered as a pedagogical and ludical place without defined borders or law restrictions, limited only by the granite landscapes of the Monsanto region. It has “The Boulders Trail”, a pedestrian trail with 7 km with mixed urban/mountain features. The park main objectives is fundamentally promotion and increase of geological awareness.



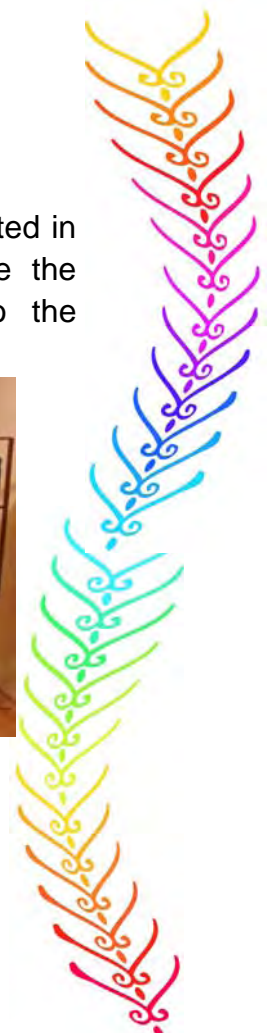
The **Sculpture Exhibition in Granite of Alpalhão** shows the reality of granite exploration as an ornamental stone, the most important economical resource of the region, which led to the creation of an interesting international exhibition of sculptures in granite, using the village as the exhibition hall.



The **Municipal Centre of Culture and Development of Vila Velha de Ródão** has a museum dedicated to archaeology where it is possible to find geological information about the region. There are fossil trunks, rocks and a geological map in three dimensions that can tell the geological history of Vila Velha de Ródão in the last 600 million years.



The temporary exhibition **“The World of Trilobites of Sam Gon III”** hosted in the future Paleozoic Museum presents the trilobites, that have made the Cruziana trace fossils in Penha Garcia. This place promotes also the palaeontological research in Portugal and the geoconservation.



Geotourist Pedestrian Trails

There are more than 439 km of signed pedestrian trails all over the territory. 103 km of these paths have geological interest and can be explored in educational programs and geotourist routes.

Gardunha Trail (PR1 Castelo Branco)

Municipality: Castelo Branco

Start and Finish: Casal da Serra/Louriçal do Campo

Extension: 17,4 km (there is a short cut trail with 9 km)

Duration: 5h

Difficulty level: High

Geological interest points: boulder fields, granite morphologies, water springs, Ocreza valley, Cordilheira Central mountain range.

This trail takes us to the top of Serra da Gardunha, passing by rocks sculpted by erosion agents, pure and cold water springs, and waterfalls showing crystal-like water running and by water mills hidden by lush flora.



Fossils Trail (PR3 Idanha-a-Nova)

Municipality: Idanha-a-Nova

Start and Finish: Chão da Igreja Square

Extension: 3 km

Duration: 2h

Difficulty level: Easy

Geological interest points: trace fossils, Ponsul fluvial gorge, Penha Garcia-Cañaverl Syncline, tectonic folds and faults, sedimentary structures.

Walking through Penha Garcia village and Ponsul river valley is possible to understand the profusion of marine life that inhabited Earth, in this area, almost 500 million years ago. From ocean to the mountain, the geological evolution of a unique landscape, from history of people and from a special culture rooted in Nature.



Mines Trail (PR4 Idanha-a-Nova)

Municipality: Idanha-a-Nova

Start and Finish: Segura Tourism Office

Extension: 10 km

Duration: 3h

Difficulty level: Easy

Geological interest points: mines, washing plant, mineralizations, contact granite-schist, Segura Fault. Through Erges river steeps we arrive at ancient mining exploitations of tungsten, tin, lead, gold, barite and where it is still possible to see traces of technological evolution for mining exploitation.



Boulders Trail (PR5 Idanha-a-Nova)

Municipality: Idanha-a-Nova

Start and Finish: Monsanto Tourism Office

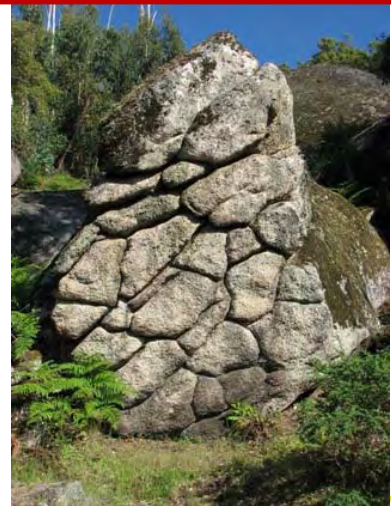
Extension: 7 km

Duration: 3h30

Difficulty level: Medium

Geological interest points: *inselberg*, granite morphologies at meso to mega scales, chemical weathering, Castelo Branco Plain Surface, granite lithofacies.

Walking through the typical granite landscapes with boulders, in Monsanto, you can find amazing and imposing landforms sculpted by erosion across times. Starting from the “Most Portuguese Village” it unravels all the evolution that rocks suffered since their formation deep in Earth, until their final exposure in a granite archipelago that stands slashed from the schist acrid sea.



“Conhal” Trails (PR4 Nisa)

Municipality: Nisa

Start and Finish: Arneiro

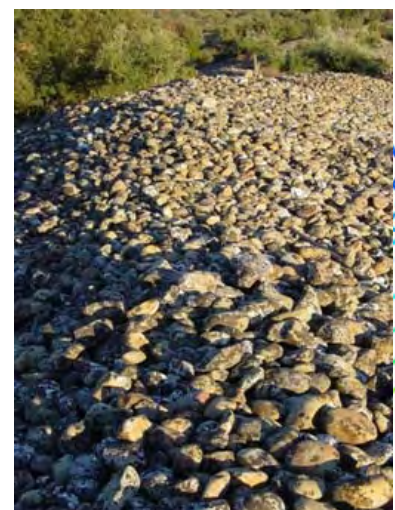
Extension: 9,8 km

Duration: 3h30

Difficulty level: Medium

Geological interest points: Tejo epigenic gorge, iron and gold mines, Ponsul Fault, Arneiro Graben, quartzite ridges, arkoses and fluvial terraces.

Crossing hills, contemplating the silent flight of birds and appreciating geological phenomena of Serra de S. Miguel is what you can do along this trail, while appreciating Tejo valley, Portas do Rodão Natural Monument and Roman remains of the giant Conhal do Arneiro gold mine.



Secrets from Almourão Valley (PR2 Proença-a-Nova)

Travel across the bones of Earth (PR6 Proença-a-Nova)

Municipality: Proença-a-Nova

Start and Finish: Sobral Fernando

Extension: 6,5 km / 18 km

Duration: 2h30 / 6h00

Difficulty level: Easy / medium

Geological interest points: tectonics (folds and faults), Ródão Syncline, Ocreza River gorge, mines, fossils.

There is no better perspective of the deep Almourão gorge and of the Portas do Almourão Geomonument than these trails, by the marvelous natural landscapes viewed from thematic viewpoints. Quartzite shows up here as a powerful rock, with an ancient history that reveals the build of a mountain that Ocreza river ripped in his path, across time.



Schist's Path "Vultures Flight"

Municipality: Vila Velha de Ródão

Start and Finish: Foz do Coirão

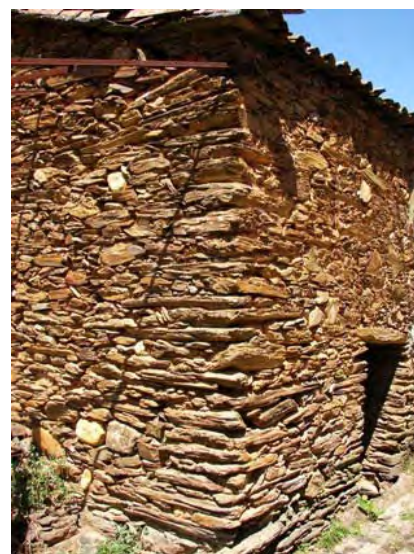
Extension: 11 km

Duration: 4h00

Difficulty level: High

Geological interest points: tectonic folds and faults, Ocreza fluvial Canyon, fossils, Talhadas mountain.

This is a trail through beautiful natural landscapes framed by Talhadas mountain incised by Ocreza river valley through the geomonument Portas Almourão, a site with rocks of about 500 million years old filled with traces of an ocean that once existed here.



Orvalho GeoTrail

Municipality: Oleiros

Start: Orvalho / Finish: Cabeço Mosqueiro viewpoint

Extension: 7 km

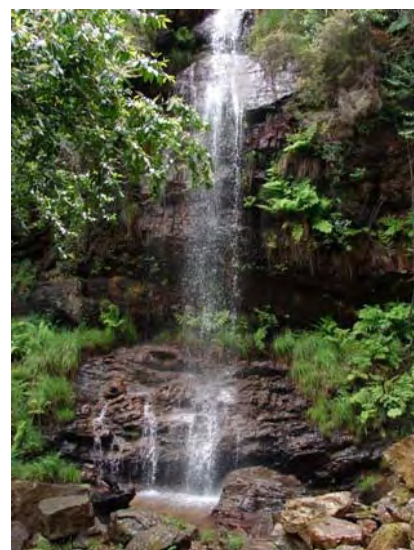
Duration: 3h30

Difficulty level: Medium - high

Geological interest points: Fraga da Água d'Alta, waterfalls, Água d'Alta stream, Cabeço Mosqueiro viewpoint, Penedo das Sardas hill.

Walking along this trail you cross Água d'Alta stream and a succession of cascades in Fraga da Água d'Alta, where the water was stronger than the rock.

The energy spent by climb to the Cabeço Mosqueiro viewpoint is rewarded with the magnificent scenery over the surrounding mountains Alvelos, Açor, Estrela and Muradal.



How to get to Idanha-a-Nova, in Geopark Naturtejo?

Arriving by plane

There will be a transfer – GeoBus – on 13th September at 19h00 and 14th September at 17h00 from the airports to Idanha-a-Nova and 17, 18, 19, 21 and 23rd September at 9h00 from Idanha-a-Nova to the airports between Lisboa, Porto, Madrid Airports and Geopark Naturtejo (Idanha-a-Nova). Please make your registration in GeoBus at geral@naturtejo.com with your flight details.

Arriving by train (if you want to come by yourself)

Tickets and information at: www.cp.pt

From Lisboa

IC train from Santa Apolónia or Gare do Oriente stations to Castelo Branco

From Porto

IC train from Campanhã or S. Bento stations to Castelo Branco

From Madrid

Tickets and information at: www.renfe.com

Train from Atocha and Chamartin stations to Lisbon and then see **From Lisboa** to reach Castelo Branco

Getting to the Geopark Naturtejo by car

GPS – UTM 29S 0650049 4421077

From Lisboa: 261 km

A1 (direction Porto) – Torres Novas

A23 (direction Castelo Branco) – exit in Alcains; direction to Idanha-a-Nova (Centro Cultural Raiano)

From Porto: 305 km

A1 (direction Lisboa) – Aveiro A25

A25 (direction Guarda) – Covilhã A23

A23 (direction Lisboa) – exit in Lardosa/Idanha-a-Nova; direction to Idanha-a-Nova (Centro Cultural Raiano)

From Madrid: 382 km

A5 (direction Badajoz) – Navalmoral de la Mata EX-A1

EX-A1 (direction Portugal) – Termas de Monfortinho borderland; direction to Idanha-a-Nova (Centro Cultural Raiano)



Logistics

Petrol station

Ecomarché – Av. Zona nova de expansão - 6060-101 Idanha-a-Nova
(+351 277 202 590)

Galp – Av. Zona nova de expansão - 6060-101 Idanha-a-Nova
(+351 277 200 270)

Pharmacies

Farmácia Andrade (Idanha-a-Nova) - Largo Sr.^a Rosa, 1
(+351 277 202 134)

Farmácia Serrasqueiro Cabral (Ladoeiro) - Estrada Nacional 354 - R/c – 50 (+351 277 927 133)

Medical Care

Idanha-a-Nova Health Center - Rua Aprigío Leão de Meirelles
(+351 277200210)

Amato Lusitano Hospital (Castelo Branco) - Avenida Pedro Álvares Cabral (+351 272322133)

Tourism Offices

Idanha-a-Nova - Rua de São Pedro - 6060 Idanha-a-Nova
(+351 277 201 030)

Centro Cultural Raiano - Av. Joaquim Morão - 6060-101 Idanha-a-Nova
(+351 277 202 900)

Penha Garcia - Largo Chão da Igreja - 6060 Penha Garcia
(+351 277 366 011)

Monsanto - Rua Marques da Graciosa - 6060 Idanha-a-Nova
(+351 277 314 642)

Shopping

Ecomarché – Av. Zona nova de expansão - 6060-101 Idanha-a-Nova
(+351 277 202 590)

Minipreço – Av. Zona nova de expansão - 6060-101 Idanha-a-Nova
(+351 277 200 270)



Accommodation

| | Website / E-mail | Single / night | Double / night | Information |
|--|--|----------------|----------------|--|
| Parque de Campismo Orbitur *** (camping) | www.orbitur.pt | * | * | If you come by your own car (10 km from Idanha-a-Nova) |
| Pousada da Juventude de Idanha-a-Nova (Youth Hostel) | www.pousadasjuventude.pt/ | ** | 30,75€ | Idanha-a-Nova: 500 m from the venue |
| Hotel Estrela da Idanha *** | www.estreladaidanha.pt | 57,00€ | 66,50€ | Idanha-a-Nova: 100 m from the venue |
| Hotel Idanha Natura*** | idanhahotel@gmail.com | 41,00€ | 57,00€ | There will be transfer (12 km from Idanha-a-Nova) |
| Best Western Hotel Rainha Dona Amélia*** | www.bestwestern.pt | 43,50€ | 52,00€ | There will be transfer (35 km from Idanha-a-Nova) |
| Hotel Tryp Colina do Castelo*** | www.trypcolinadocastelo.solmelia.com | 51,50€ | 61,50€ | There will be transfer (35 km from Idanha-a-Nova) |

* Bungalows 4 people: 46,00€/ night; bungalows 6 people: 56,00€/ night

** Single occupation in multiple room 11,75€/ night

There will be daily transfers between Idanha-a-Nova and the hotels outside the town.

Prices between 13rd and 17th September 2009 in Euro (€). Naturtejo will provide the booking service for you (see the registration form) in the available rooms. Sooner you do the registration closest you will get from the Conference Hall.

Program for accompanying persons

Geopark Naturtejo can manage a program through the territory for accompanying persons. Please contact us (www.naturtejo.com) and see the landscapes and emotions we have to offer.





Submission of abstracts (Attention! News!)

Abstracts must be submitted until **1st July 2009** by e-mail to:
abstracts8egc@naturtejo.com

Please send manuscript and figures in separate files.

Subjects:

1. Geoparks and Tourism
2. Geotourism and local development
3. Geoparks and Science
4. Geoconservation best practices and wrong ways
5. Marketing strategies for a strong EGN brand
6. Man and Nature: cultural landscapes
7. New Geoparks and their tutors

Guidelines for the abstract

Format: The Abstract Book will be published in A4 size (21,6 x 27,9 cm).

Length: Your abstract should **not exceed five (5) printed pages including figures.**

Style Guidelines:

Title: **Arial 14 pt. bold**

Authors: **Arial 12 pt. bold**

Affiliation: Arial 10 pt. normal

References: Arial 10 pt. normal

Body text: Arial 11 pt. normal, single line spacing.

Software: Manuscripts may be submitted in Word 2007 (or older)



Figures resolution should be 300 DPI. All figures should be submitted separately from the text files as jpg or gif. Please indicate preferred place for your figures in text.

All authors should choose the type of presentation (oral or poster) they prefer. Please mention the subject where your abstracts should be included. The abstracts will be evaluated by the Scientific Committee. Authors will be notified of the type of presentation (oral or poster) in **15th August**.

Technical advices for your presentations

If the presentation has sounds and/or animations, movies please provide these files with the original presentation file.

Be sure your design/lettering is visible from far distance.

Don't use fonts below 20 pt.

The organization will provide data show, PC and loudspeakers for the oral sessions. All presentations will be uploaded to the presentation computer before each session.

If you need any kind of special software for the presentation please let us know.

Posters will be posted, in the beginning of the Conference in the conference room hall at 15th September.



Post Conference Field Trips

A. Geopark seen from the clouds – 17th and 18th September



Monitor: Joana Rodrigues

Fees: 390€(Euro)

Minimum: 8 participants

The sky is the limit for Geopark Naturtejo. You will travel through the clouds and enjoy the Nature.

This Field Trip includes a walk in the Natura 2000 site at Gardunha Mountain (the highest summit of the Geopark) and Skydiving (tandem with an expert) in Proença-a-Nova, a real jump into the Geopark's core. Zêzere Meanders will open the second day of air view adventure, followed by a visit to geological viewpoints in Portas do Ródão Natural Monument.

B. Discovering the Geomonuments of Geopark Naturtejo – 17th and 18th September



Monitor: Maria Manuela Catana

Fees: 230€(Euro)

Minimum: 8 participants

Making bread... and fossils in the Ichnological Park of Penha Garcia. You will try a guided visit with donkeys as a truly Trilobite Adventurer... Let's hike at Gardunha Trail and swim in Ocreza fresh and pure springs. For dinner "Earth Slices" and for desert, Sweet Trilobites and Granulites, at the geo-bakery of Salvaterra do Extremo. The sun will rise early at Salto da Cabra viewpoint but pay attention to the Smugglers Trail. In Portas de Almourão viewpoints we will see impressive geology and avifauna, near the Schist Village of Foz do Cobre. In the afternoon let's enjoy the Tejo River by boat through Portas do Ródão Natural Monument. To finish we will have a walk at the Roman mine Conhal do Arneiro.



C. Kayak Expedition down the natural wonders of Tejo River– 17th and 18th September



Monitors: Carlos Neto de Carvalho

Fees: 220€(Euro)

Minimum: 8 participants

Only for the tuffest! Off-road towards the junction between Erges and Tejo rivers. Then, prepare your paddle and waterproof gear to jump with your kayak down into the Tejo River till Cedillo Dam with a visit to Tejo Internacional Natural Park where we are going to have a wild picnic. The day will finish AFTER 10 KM downstream, camping in the wilderness: the bathroom is anywhere you feel comfortable...

For starting early in the morning let's go downstream the Tejo river again seeing several geo- and archeosites until Portas do Ródão Natural Monument. To restore your stamina why not a picnic lunch in the water margin at the Lovers Island?

Bring your camping material!

D. Learning to... doing nothing! At the Geopark – 17th and 18th September



Monitors: Ana Rita Mota

Fees: 385€(Euro)

Minimum: 8 participants

For waking up: hydromassage at Monfortinho Thermal Spa. After lunch, nothing is better than resting the mind at Tejo Internacional Natural Park. Let's see Salto da Cabra and Alares geomorphological viewpoints and feel the deers calling their females. We will have a donkey taking wine and other traditional delicacies with the approval of your stomach. The sunshine has the perfect light to make a photo safari. To start the second day we are going to do some birdwatching in Portas do Ródão Natural Monument and walk slowly through Land Art Exhibition at Alpalhão to learn sculpting at the Rock Festival. In the afternoon we suggest a special spa experience at the newly rebuilt Fadagosa Thermal Complex.



E. Big trip by the Portuguese Geoparks: Naturtejo and Arouca Geoparks – 17th to 20th September



Monitors: João Geraudes (Geopark Naturtejo); Artur Abreu Sá and Daniela Rocha (Geopark Arouca)

Fees: 430€(Euro)

Minimum: 8 participants

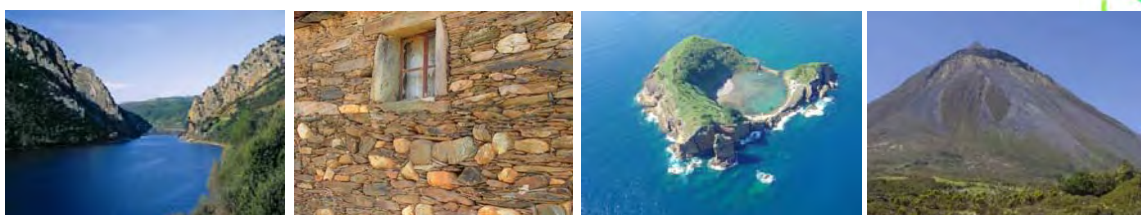
Geopark Naturtejo (17th and 18th September)

Let's start our expedition with archaeological and historical heritage at Idanha-a-Velha. Afterwards we propose a visit to Portas do Ródão Natural Monument and the important Rock Art Complex of Tejo coming from the Neolithic times. For resting we choose Foz do Cobrão, a Schist Village in the Ocreza river valley right near Portas do Almourão geomonument. In the next morning let's hike in the Schist Path and revive golden times with the "Há Ouro na Foz" activity and learn everything about panning for gold. To finish our adventure at the Naturtejo Geopark we will do a visit to Álvaro, a Schist Village located in a meander, not far from Oleiros. Transfer at the evening to Arouca.

Geopark Arouca (19th and 20th September)

The third day will start at Geopark Arouca with a visit to the world famous Giant Trilobites in Canelas Interpretative Center and the Valério Quarry. Afterwards we will visit the wild Paiva River and discover impressive trace fossils in the Paiva valley cliffs. After tasting Arouca traditional cow meat "Posta Arouquesa" (for those who prefer vegetables there are biological products coming from the farms nearby) let's visit the ancient mines in Rio de Frades. In the next day we will discover Freita Mountain geosites: the dream Frecha de Mizarela Waterfall, the legendary Pedras Parideiras (rock delivering stones), Corn Bread Rock, Detrelo da Malhada and S. Pedro Velho. To finish Geopark Arouca we will visit the Monastery of Arouca, the Museum of Sacred Art and the Municipal Museum. Transfer back to the airports.

F. Big trip by the Portuguese Geoparks: Naturtejo and Açores Geoparks – 17th to 22nd September



Monitors: João Galdes (Geopark Naturtejo); Eva Almeida Lima, João Carlos Nunes, Manuel Paulino Costa and Andrea Porteiro (Geopark Açores)

Fees: 1050€ (Euro)

*(the price of the flights may change)

Minimum: 20 participants

Geopark Naturtejo (17th and 18th September)

Lets start our expedition with archaeological and historical heritage at Idanha-a-Velha. Afterwards we propose a visit to Portas do Ródão Natural Monument and the important Rock Art Complex of Tejo coming from the Neolithic times. For resting we choose Foz do Cobrão, a Schist Village in the Ocreza river valley right near Portas do Almourão geomonument. In the morning let's hike in the Schist Path and revive golden times with the "Há Ouro na Foz" activity and learn everything about panning for gold. To finish our adventure at the Naturtejo Geopark we will make a visit to Álvaro, a Schist Village located in a meander, not far from Oleiros. Transfer at the evening to Lisbon International Airport.

Geopark Açores (19th - 22nd September)

This field trip will start right in the Azores Triple Junction with a visit to S. Miguel island geosites: the mysterious Fogo Volcano caldera, a bath at Caldeira Velha hotsprings, Santa Iria Viewpoint to North Coast, Furnas Volcano caldera, hotsprings and Lagoon (no, it is not a dream!). Let's try local food cooked in the ground in hydrothermal steam (Furnas stew or Cod stew for non-meat eaters). The visit continues to the outstanding Vila Franca do Campo surtseyan Islet and Caloura lava delta.

The next day we will fly to Pico island where we will see some geosites: Lajidos pahoehoe lava fields, Furna (Sto António) fossil sea cliff, Lagoa do Capitão Fault and Lagoon, Lajes do Pico lava delta (fajã), S. João 1718 eruption forest Park and the book example Torres Lava Tube. In the end of the day we propose a boat trip to Faial island from where we can see the magnificent Pico stratovolcano (the highest mountain in Portugal!) coming out from the sunset.

Let's start the day with a visit to Faial best geodiversity examples:

Monte da Guia submarine volcano, Ponta da Espalamaca and Pedro Miguel Graben, and the impressive Faial Caldera. Let's feel the island trekking at Morro do Castelo Branco lava dome. Our visit will finish with a visit to Capelinhos Volcano Interpretative Center to feel the power of the 1957-58 eruption.

G. Big trip by the Portuguese Geoparks: Naturtejo and Porto Santo Geoparks – 17th to 22nd September



Monitors: João Geraldes (Geopark Naturtejo) and Vanda Dias (Geopark Porto Santo)

Fees: 1050€ (Euro)

*(the price of the flights may change)

Minimum: 8 participants

Geopark Naturtejo (17th and 18th September)

Let's start our expedition with archaeological and historical heritage at Idanha-a-Velha. Afterwards we propose a visit to Portas do Ródão Natural Monument and the important Rock Art Complex of Tejo coming from the Neolithic times. For resting we choose Foz do Cobrão, a Schist Village in the Ocreza river valley right near Portas do Almourão geomonument. In the morning let's hike in the Schist Path and revive golden times with the "Há Ouro na Foz" activity and learn everything about panning for gold. To finish our adventure at the Naturtejo Geopark we will make a visit to Álvaro, a Schist Village located in a meander, not far from Oleiros. Transfer at the evening to the Lisbon International Airport.

Geopark Porto Santo (19th - 22nd September)

In Porto Santo Island, that million years ago was a tropical realm off the African Coast and nowadays is the smallest golden island still to be found, let's start with a visit to "Ecoteca" and the Columbus Museum. After tasting traditional delicacies and the sweetest grapes in the world we propose "Pico Ana Ferreira – Morenos – Calheta" trail to find several amazing geosites, an outstanding combination of reefs, basaltic pipes and paleodunes. You can even find here the only known monument made of rhizoliths and learn the legends behind them... In the next days we will walk by the highs of "Calhau da Serra de Fora" trail, where the brown cliffs meet the bluest waters, and visit two newly-discovered pearls for geotourism: Ilhéu de Cima and Ilhéu da Cal islets. Here you can go deep into ancient limestone mines and see petrified "sea oranges" with your own eyes! The historical fight against dryness and the importance of water for Porto Santo may be found in Fonte da Areia (Sand Fountain) spring and well preserved traditional technologies such as in "Língua de Vaca" (The Cow's Tongue watermill) or the new desalinating complex. Geomedicine Centre is one of the potentialities of Porto Santo to be loved. Before leave this island we propose a different type of visit to a Golf Camp...



Social Programme and Special Events

Opening Ceremony

The opening ceremony of the 8th European Geoparks Conference will take place at the Plenary hall of the Centro Cultural Raiano, on 15th September. It is open to all participants. On 14th during the evening there will be the Public Opening Ceremony at the Ichnological Park of Penha Garcia with an impressive multimedia presentation dedicated to environment and local people from all around the world.

Medieval Icebreaker Dinner

Geopark Naturtejo invites all participants to the icebreaker dinner before the Public Opening Ceremony, where you can taste traditional Portuguese food in a Templar Environment. It will take place at the Ichnological Park of Penha Garcia, in the Mother Church Viewpoint (30 minutes from Centro Cultural Raiano), on 14th September. Please, take the bus in front of Centro Cultural Raiano at 18.30 to get to the Medieval Dinner

Closing ceremony

The closing ceremony, on 16th September will take place at the Plenary hall of the Centro Cultural Raiano. Geopark Naturtejo invites all the participants for the farewell to the 8th European Geoparks Conference.



Feira Raiana – I European Geoparks Tourism Fair

This Fair brings to Idanha-a-Nova more than 20000 people from Geopark and surrounding communities, the people from the Borderland. This will be the best time to try a “borrachão” and “jeropiga” with our people. The European Geopark’ stand area in the core of the Feira Raiana will present, between 14th and 19th September, the best of our Network to local communities and Conference participants.

Check detailed information and registration form in our webpage:
www.geoparknaturtejo.com.

IFIF 09 – Idanha Film and Internet Festival

The festivals first edition (2009) will coincide with the VIII European Geoparks Conference, to be held in Idanha-a-Nova in September 2009, and will focus on a theme that is in line with the festival’s paradigm – the conservation of our world’s natural heritage and, more specifically, Geoparks in Europe and around the world.

The opening documentary will be the presentation film of Portugal’s national Geopark Naturtejo. All other Geoparks taking part in the VIII European Geoparks Conference will be invited to exhibit a film/documentary about their region’s Geopark or a subject related to it during special social events open to the general public.

Find the submission form in www.if-if.org/pdfs/entry_form_2009.pdf

To submit your documentary please send an e-mail to submit@if-if.org

Deadline for submissions: **26th of June.**

Find all the information in www.if-if.org



Intensive Course on Geodiversity and Geological Heritage Assessment - University of Minho (Braga) 9th – 13rd September 2009

The intensive course on Geodiversity and Geological Heritage Assessment is addressed to PhD and Master students working on Geoconservation topics and particularly on geosites inventory and assessment. The interested students are invited to send the Application Form accompanied by a short CV and an abstract (one page) of the PhD or Master project. **For those who do the double registration at the Course and the Conference there will be special discounts for both events. See Registration Form.**

More information:

<http://www.dct.uminho.pt/cct/intensivecourse/intensivecourse/course.html>

Conference Fees

Regular Registration: 200€(Euro)

Include Abstract Book, promotional materials, coffee-break refreshments, ice-breaker dinner, Feira Raiana-I European Geoparks Tourism Fair, Idanha Internet and Film Festival, airport and hotel transfers, guided visit to the Ichnological Park of Penha Garcia and opening and closing ceremonies.

Students' Registration: 75€(Euro)

Include Abstract Book, promotional materials, coffee-break refreshments, ice-breaker dinner, Feira Raiana-I European Geoparks Tourism Fair, Idanha Internet and Film Festival, airport and hotel transfers, guided visit to the Ichnological Park of Penha Garcia and opening and closing ceremonies.

A photocopy of the student ID should be sent to the Organization with the Registration form.

Special Registration for those participating in the University of Minho Intensive Course on Geodiversity and Geological Heritage Assessment: 150€(Euro)

Include Abstract Book, promotional materials, coffee-break refreshments, ice-breaker dinner, Feira Raiana-I European Geoparks Tourism Fair, Idanha Internet and Film Festival, airport and hotel transfers, guided visit to the Ichnological Park of Penha Garcia and opening and closing ceremonies.



Accompanying persons: 100€(Euro)

Include coffee-break refreshments, ice-breaker dinner, Feira Raiana-I European Geoparks Tourism Fair, Idanha Internet and Film Festival, airport and hotel transfers, guided visit to the Ichnological Park of Penha Garcia and opening and closing ceremonies.

Other programs may be requested to Naturtejo in www.naturtejo.com.

Field-trips

The cost covers transportation, airport-hotel transfers, meals, refreshments and accommodation during the field-trip.

A. Geopark seen from the clouds - 390€

B. Through the Geomonuments of Geopark Naturtejo - 230€

C. Kayak Expedition through the natural wonders of Tejo River - 220€

D. Learning to... doing nothing! At the Geopark - 385€

E. Big trip by the Portuguese Geoparks: Naturtejo and Arouca Geoparks - 430€

F. Big trip by the Portuguese Geoparks: Naturtejo and Açores Geoparks - 1050€

G. Big trip by the Portuguese Geoparks: Naturtejo and Porto Santo Geoparks - 1050€



Deadlines

Abstracts submission – until **1st July** 2009

Final registration - **31st July** 2009

Field trip registration – until **31st July** 2009

Payment – until **31st July** 2009

Contacts

Naturtejo

Rua Conselheiro Albuquerque, 4 Cave C
Idanha-a-Nova 6000-161 Castelo Branco

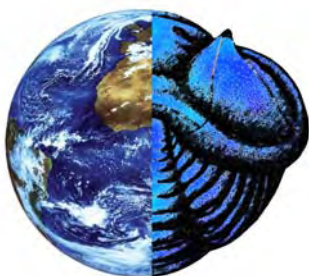
Tel.: +351 272 320 176

Fax: +351 272 320 137

E-mail: geral@naturtejo.com



All the information in <http://www.geoparknaturtejo.com>



Dare to
come?

